



KOALAS FOREVER



AUSTRALIA

Koalas Forever

A blueprint for landscape scale
restoration for species recovery

AUGUST 2024

What's different about WWF's program?



Integrating forest restoration, wildlife rehabilitation and advocacy

- **Habitat Corridors:** Large scale revegetation to restore koala corridors (tree planting and drone seeding) – Planted >450,000 trees since 2021
- **Environmental stewardship:** Protect and restore existing habitat on private land through supporting First Nations and Land for Wildlife
- **Koala Economy:** establish new economies such as Koala Friendly Carbon
- **Koala Safe Havens:** Advocate for increase in Protected Areas and an end native forest logging in priority koala habitats
- **Critical care:** Establish and capacitate wildlife hospitals across Eastern Australia to increase survival rates of sick and injured wildlife

*Integrated, multi-stakeholder and science led program,
working across tenures*



First Nations Caring for Country



Indigenous Rangers - Caring for Country

- Supporting Jagun Alliance to restore songlines and mentor young people in cultural fire practice
- Cultural burning and strategic weed removal to restore koala habitat on Githabul Country
- Minyumai Indigenous Rangers – Boorubee Recovery in Indigenous Protected Area, restoring country through tree planting and cultural fire
- Fireproofing Koalas – Traditional knowledge with drone tech and AI, is informing Quandamooka Yoolooburrabee Aboriginal Corporation (QYAC) 's traditional fire management practices and conservation work in the koala habitats of Minjerribah



Protecting koalas from wildfires using drones

ANCIENT knowledge, drone technology and artificial intelligence (AI) are coming together to help Indigenous rangers from Quandamooka Yoolooburrabee Aboriginal Corporation (QYAC) step up efforts to save a unique population of koalas from the threat of wildfires.

The koalas on Minjerribah (North Stradbroke Island) are occurring in old koalas and have been isolated for about 8,000 years. They have low levels of inbreeding, a disease decimating many mainland populations.

Quandamooka rangers from Minjerribah (northern Stradbroke Island) are combining traditional cultural fire burning. She said the coming together of technology,

It's a very exciting project for WWF - Australia and WWF - Queensland to be able to see traditional knowledge being used to care for koalas while bringing in cutting edge technology to assist. Koalas are a special animal for Quandamooka people. We have a cultural responsibility to make sure they're happy, healthy and thriving. This project has been very rewarding for me personally. It's really seeing state-of-the-art technologies used in a traditional way and seeing the ancient practices."

An image shows two people standing next to a drone on a grassy area.



Wildlife Hospital Projects



Landholder Stewardship – Supporting Land for Wildlife



Engaging local landholders to protect koala habitat

- Since 2022 we have supported over 70 landholders to register with the Land for Wildlife (LFW) Network covering more than 4000ha
- Working with Border Ranges Richmond Valley Land Network and Richmond Valley Landcare
- Supporting landowners who wish to manage areas for biodiversity and wildlife habitat
- Funding is provided for assisted regeneration and planting koala trees in priority koala corridors through small grants
- Over 30 landholder workshops and field days held in 2 years on restoring and managing koala habitat
- Registration with LFW involves a site assessment, advice on suggested management strategies and actions for the property

Working with Government



Securing private protected areas and restoring habitat in koala strongholds



Tony Rowland on his Kyogle property holding his conservation agreement

- A collaborative partnership with the Biodiversity Conservation Trust, NSW DCCEE and Envite Environment to secure conservation agreements and support habitat restoration
- 1000ha + under Conservation Agreements
- **Conservation Agreements** provide permanent protection for the valuable ecological and cultural features of the land
- Incentives: \$45,000 per landholder provided for weed control, firebreak maintenance, fencing to control livestock, strengthening the health of habitat
- **Increasing employment for Indigenous Ranger Teams** through engagement in restoration work identified in management plans

Community action to plant 500,000 trees by 2025 with Bangalow Koalas



375,000 trees planted since 2019
Over 100 private properties across 6 shires
Hundreds of volunteers involved

*Ingredient for success:
Community champion Linda Sparrow*



Innovation - restoring landslides with drone seeding



Landscape level restoration through the Koala Friendly Carbon Initiative



The Koala Friendly Carbon Initiative (KFCI) is leading the way in transforming the carbon market to actively regenerate nature and restore biodiversity.

This groundbreaking initiative includes the creation of a world-first high integrity carbon credit, certified by Accounting for Nature and assured by the World Wildlife Fund (WWF-Australia).

The KFCI's vision is to **restore landscapes back to original condition** to prevent the extinction of koalas in the wild, **using the Australian carbon credit scheme to regenerate over 10,000 hectares of high abundance koala habitat by 2034.**

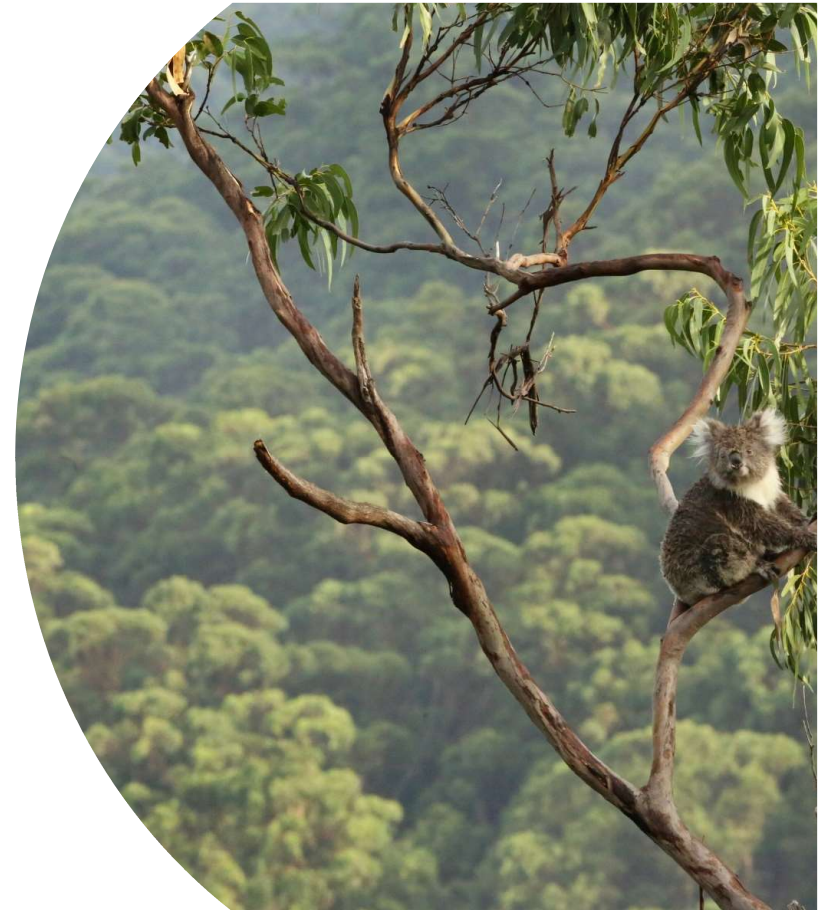


KFCI is a koala project with a carbon co-benefit



How KFCI is different to other carbon projects:

- **INTEGRITY:** high density, high biodiversity plantings with >25 different species, up to 1,100 stems per ha. This goes above and beyond standard environmental planting (EP) carbon project requirements, replicating original ecosystems, creating connectivity and maximising benefits for koalas and other iconic native animals, in addition to maximising carbon drawdown.
- **QUALITY ASSURANCE:** Monitoring of all projects using the Koala Population and Habitat Condition Method accredited with Accounting for Nature
- **IMPACT:** 100-year permanence period for projects, ensuring maximum benefits are achieved and permanent habitat is provided.
- **SCALABILITY:** A revolving planting fund established to cover the cost of establishing and maintaining new plantings, allowing landholders across the Australia's East Coast to participate – see landholder example [here](#).



Growing impact via staged expansion



Stage 1: Pilot in Northern NSW (planting complete)

- 150 hectares across 5 properties
- 160,000 trees planted
- Expect ~90,000 ACCUs over 25 years

Stage 2: extend pilot across NSW (current)

- 580 Ha of planting contracted
- Approximately 300,000 trees
- Expect ~400,000 ACCUs over 25 years



Stage 3: Scale up via 10-year program (now)

- Restore >1,000 hectares per year, of 'gold standard' high biodiversity plantings
- Support an increase in koala population of between 3,000 and 13,000
- Remove >8M tonnes of CO2
- Provide local employment and training, as well as genuine engagement with Traditional Owners
- Diversify incomes, build drought and flood resilience, reduce erosion for landholders



Monitoring and verifying koala outcomes



Accounting for Nature – Koala Population and Habitat Condition Method baseline measurements undertaken for Pilot 1 projects

- Component A: **Koala Population** (koala activity, presence and distribution) **and**
- Component B: **Koala Habitat** (context, extent and connectivity of habitat, threats, food trees and forest structure)

AfN monitoring will be repeated later this year, improved Econd scores are expected.

Process:

- ArcGIS Survey123 Connect
- Spreadsheet templates calculate Econds
- Accounts submitted to AfN for third-party verification
- Reviewed by a Scientific Advisory Committee



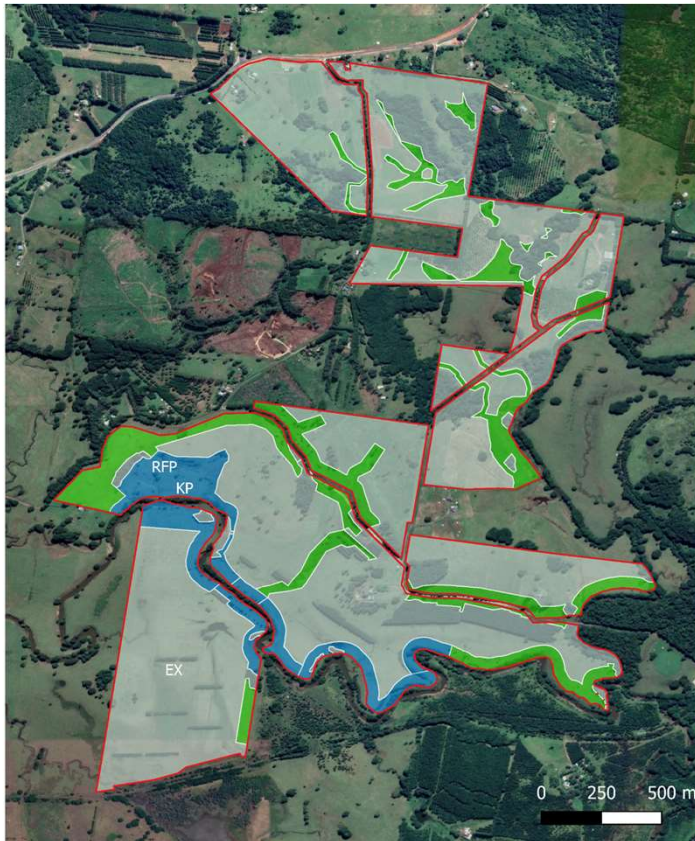
Landholders are project proponents – a case study from Pilot 1

Banyula-Saratini Farm, Clunes, NSW

- Registered Carbon project established in 2022 (ERF 174268)
- 26,664 koala food and habitat trees planted
- Planting designed to improve habitat connectivity and integrate with existing land management activities.

Banyula Farm was one of the first KFCI projects established, with additional outcomes expected to include attracting greater gliders, enhancing biodiversity and improving productivity of the land.

The project is expected to generate Australian Carbon Credit Units (ACCUs) as plantings mature over 25 years, as well as add 24 hectares of suitable koala habitat. The planting will exist alongside the property's macadamia, Davidson plum, finger lime and cattle operations.



- Project Area
- Sarantini - Morrowlands & Sara
- EX- Forest (299.8 ha)
- KP- Koala Planting (26.1 ha)
- RFP- Rainforest Planting (55.5 ha)

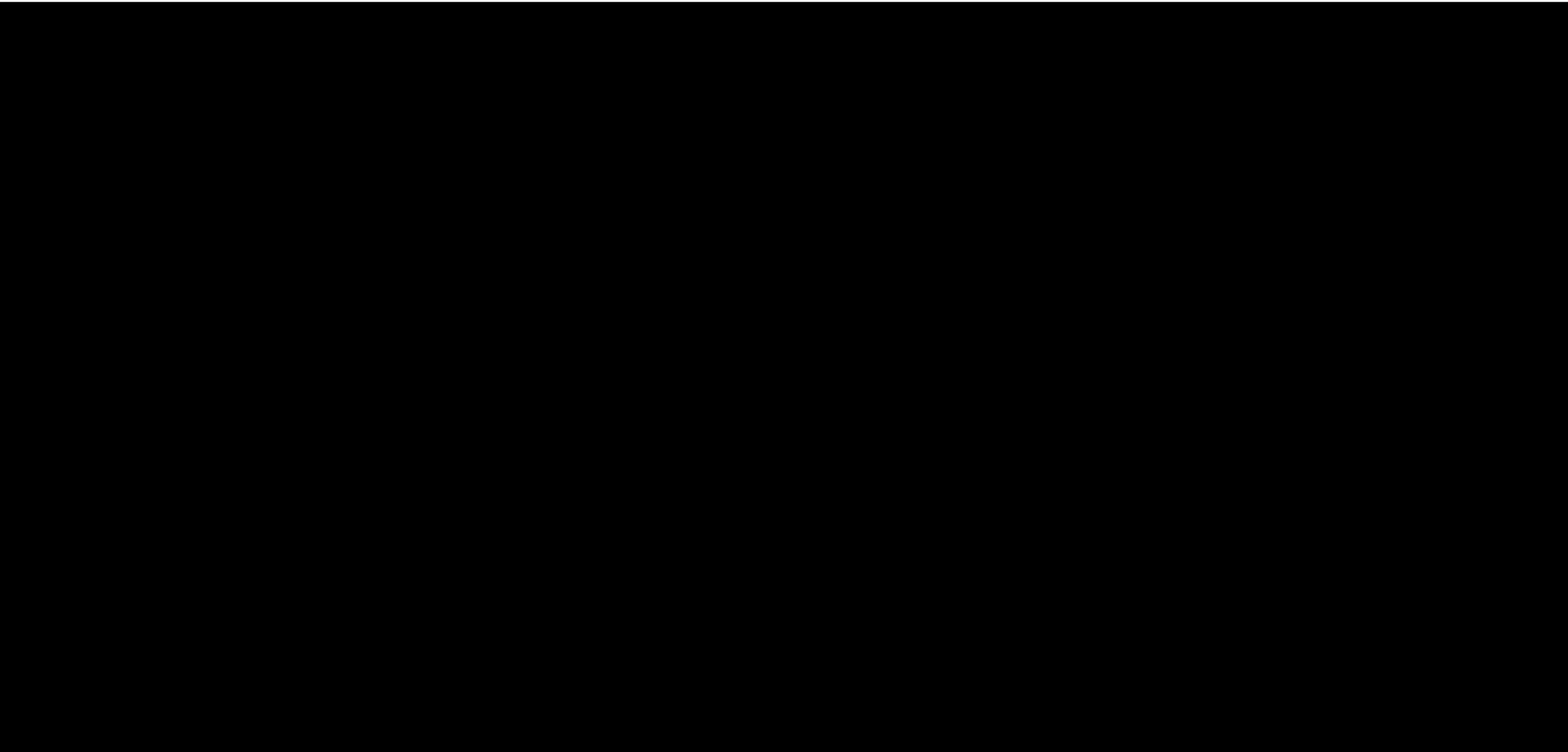


Will deliver additional 24 hectares of koala habitat

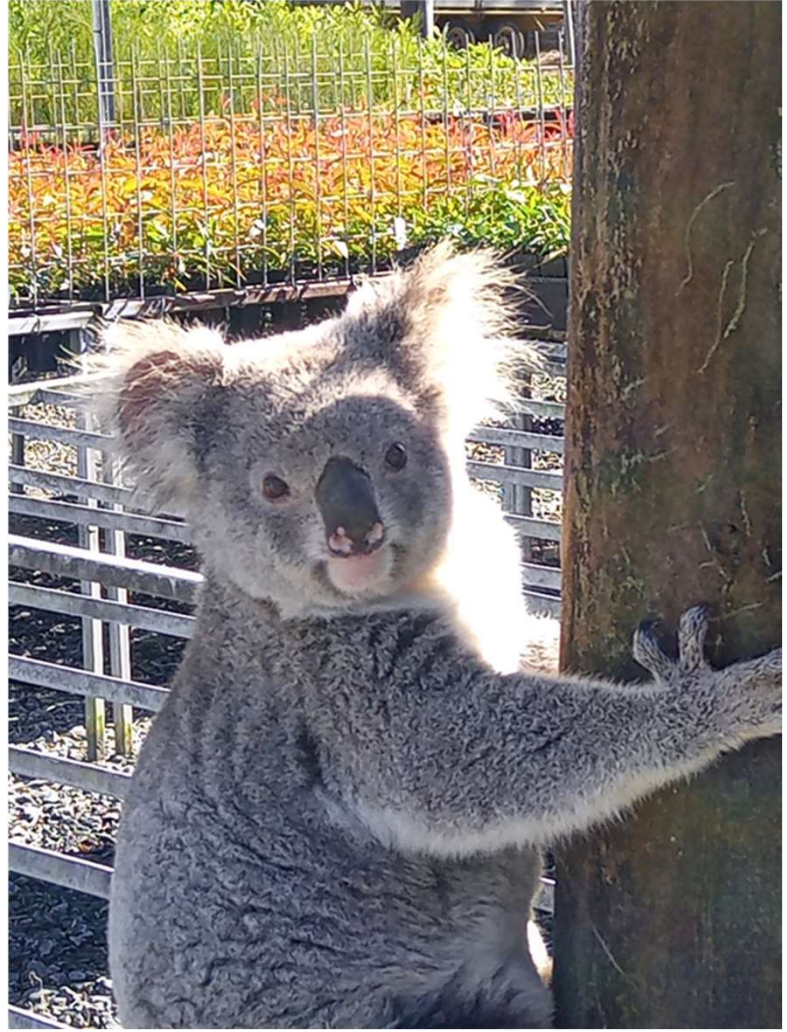


More than 20,000 ACCUs estimated over the project's lifetime

Koala Friendly Carbon landholder stories



A new and emerging threat to restoration! Claude the nursery thief!





THE CRITICAL DECISIONS WE MAKE TODAY WILL SHAPE AUSTRALIA'S TOMORROW.

For more information please contact:

Tanya Pritchard
Senior Manager, Koala Recovery and
Landscape Restoration, WWF Australia
tpritchard@wwf.org.au

Bushfire aftermath © Peter Wilson